

Character Design 10

Type - Reptile bounty hunter
Side - "Axis" Alien

I also like
this look



Character Design 10

Type - Reptile bounty hunter
Side - "Axis" Alien

This would be
the ideal look
for this
character

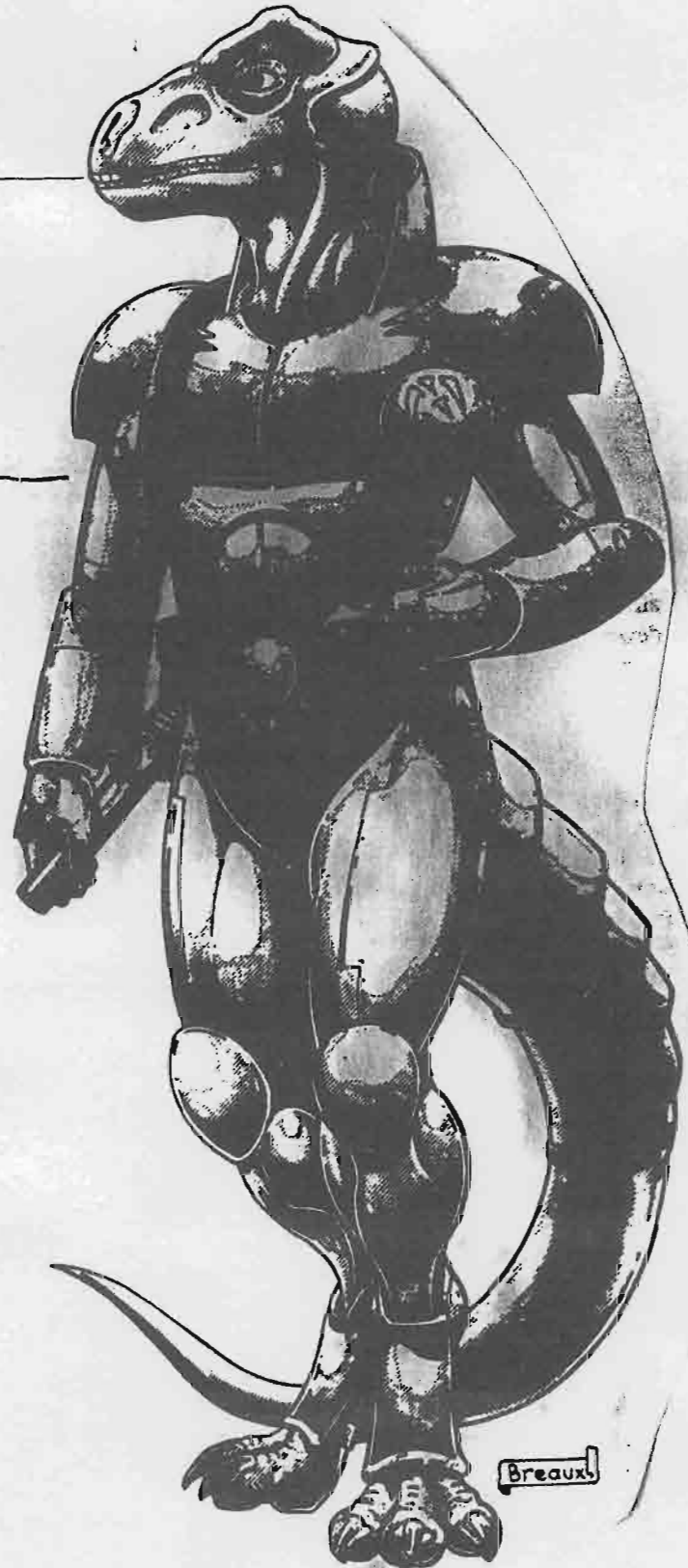


Character Design 10

Type - Reptile bounty hunter
Side - "Axis" Alien

don't like
the head

I like this
type of armor



Character Design 11

Type - Snake Warrior
Side - "Axis" Alien



Character Design 12

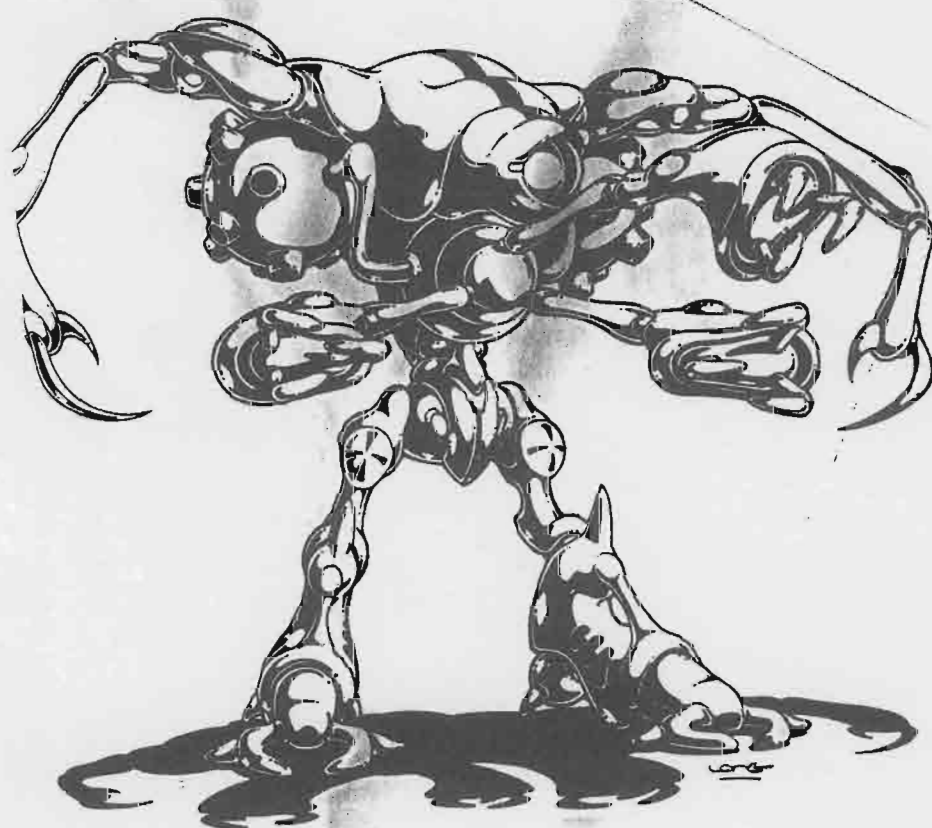
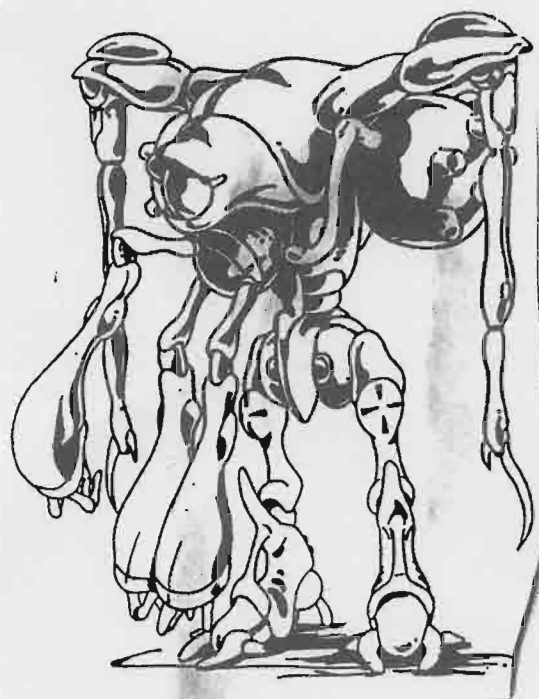
Type - Insect Robot
Side - "Axis" Alien

*I like
this design
the most*



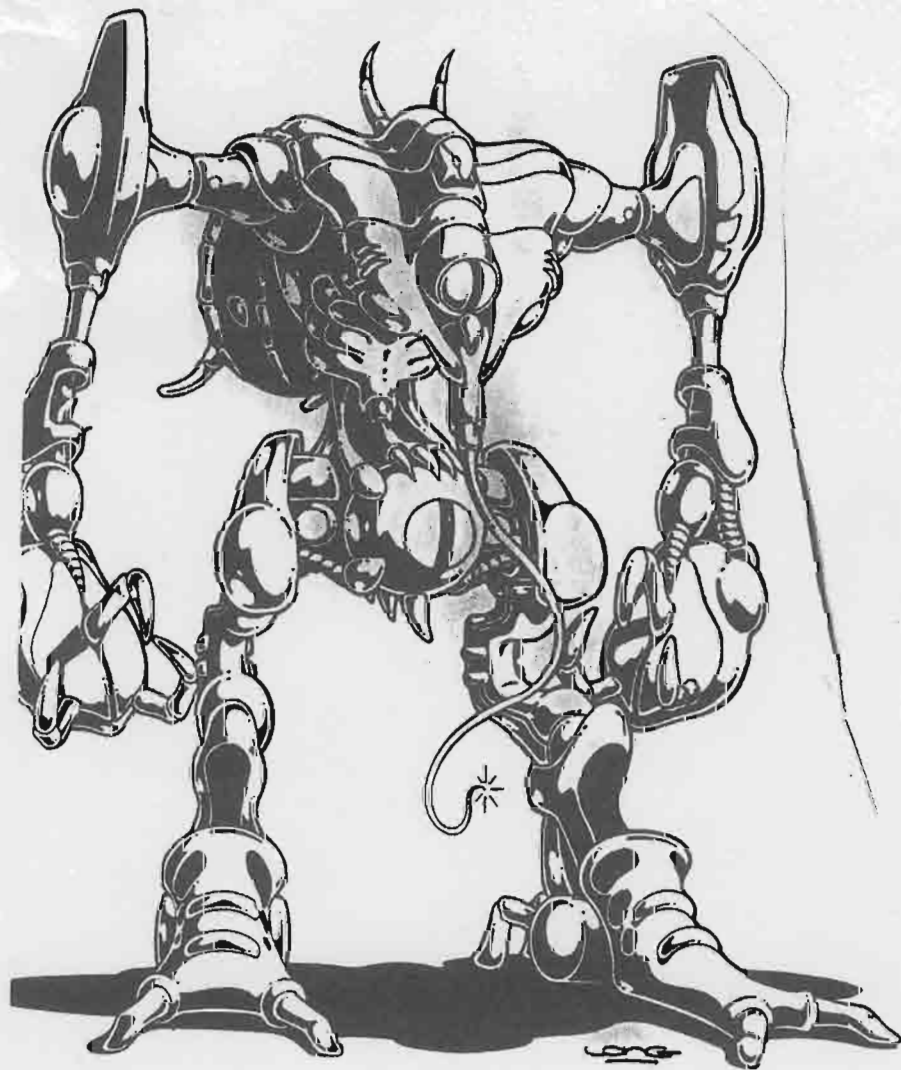
Character Design 12

Type - Insect Robot
Side - "Axis" Alien



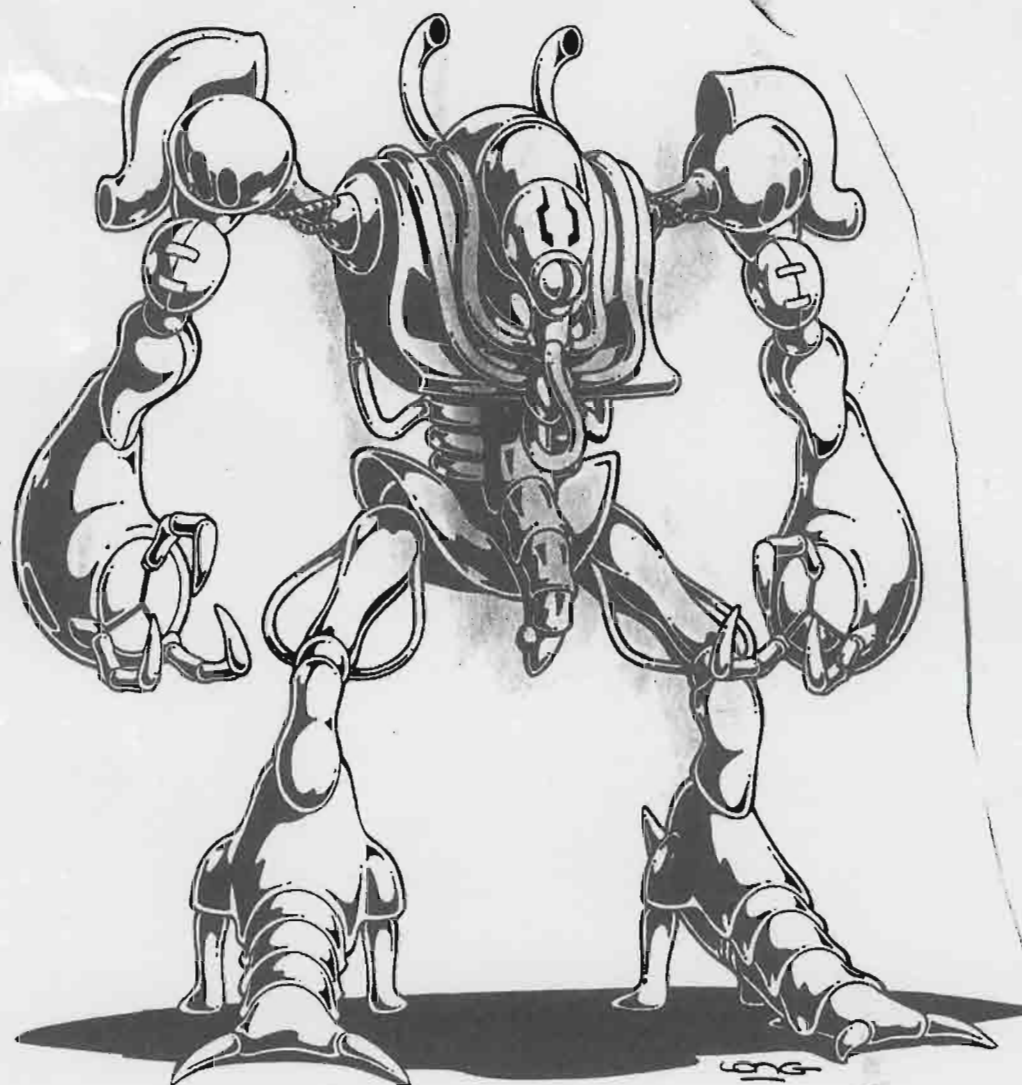
Character Design 12

Type - Insect Robot
Side - "Axis" Alien



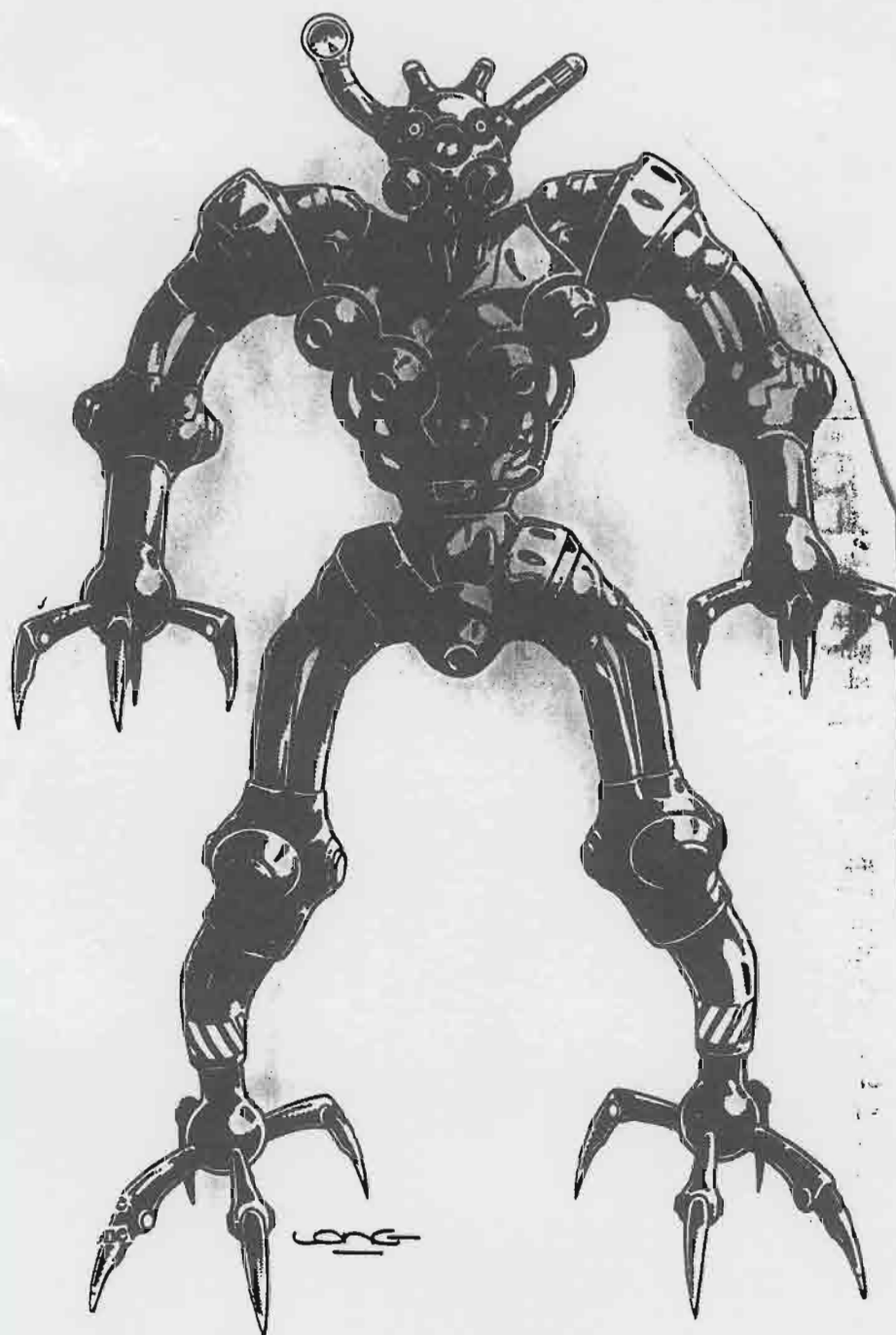
Character Design 12

Type - Insect Robot
Side - "Axis" Alien



Character Design 12

Type - Insect Robot
Side - "Axis" Alien

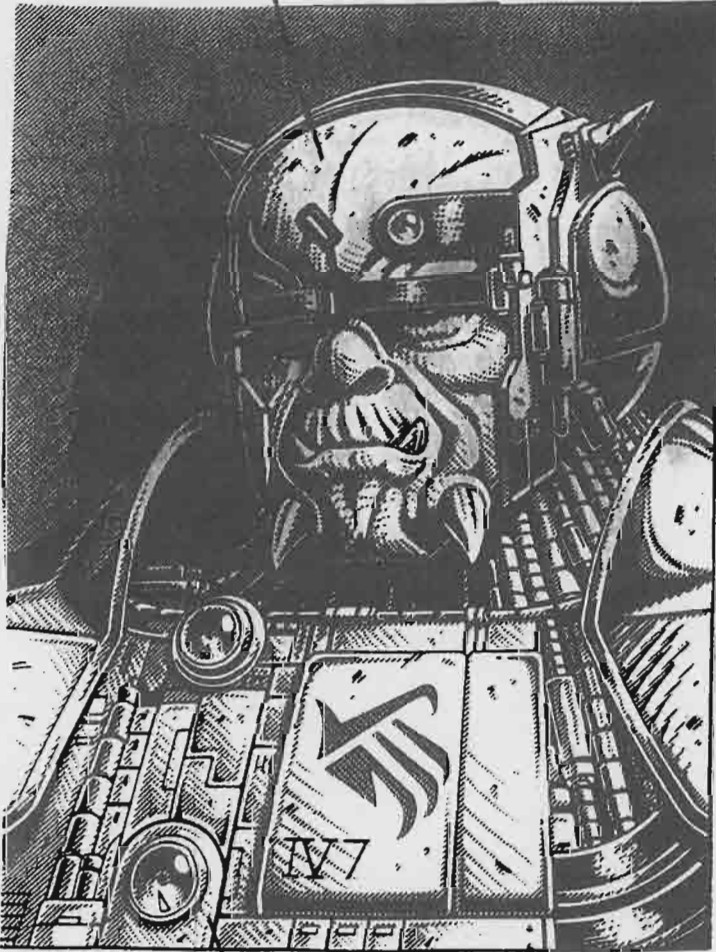


Character Design 13

Type - Time Traveler
Side - "Axis" Alien

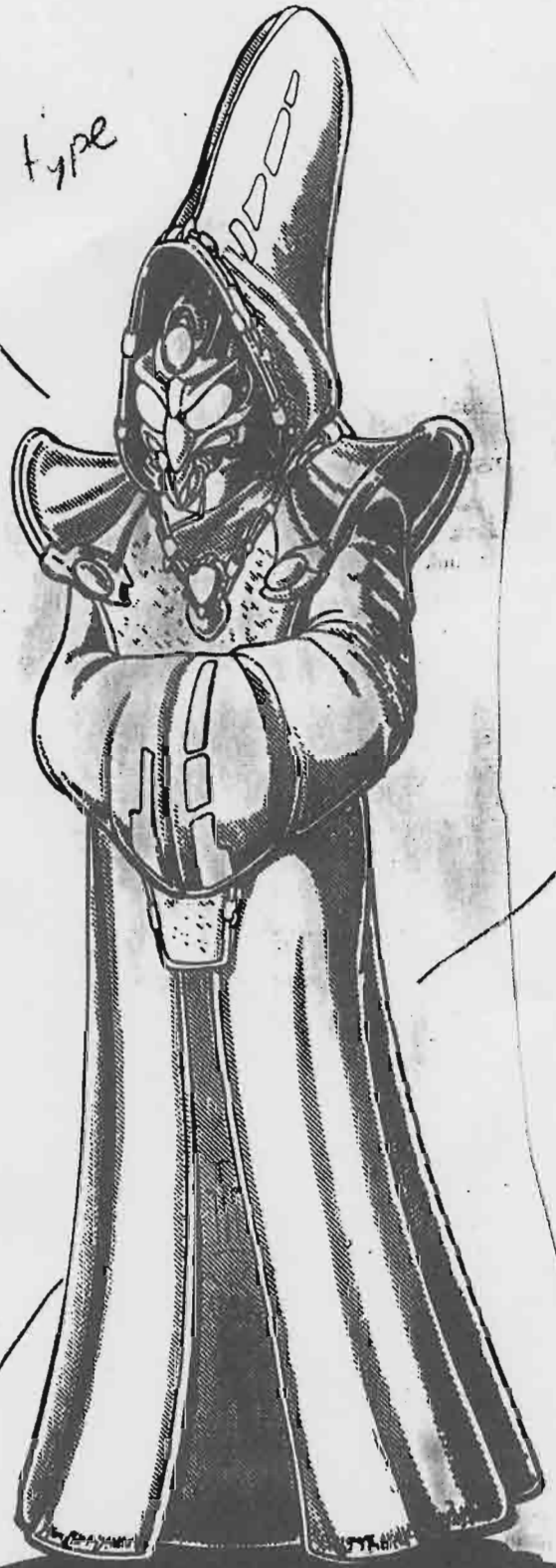
I like the
head on this one

Will have
alien rifle type
weapon



cool armor
detailing

I
don't want
the robe
must show
walking



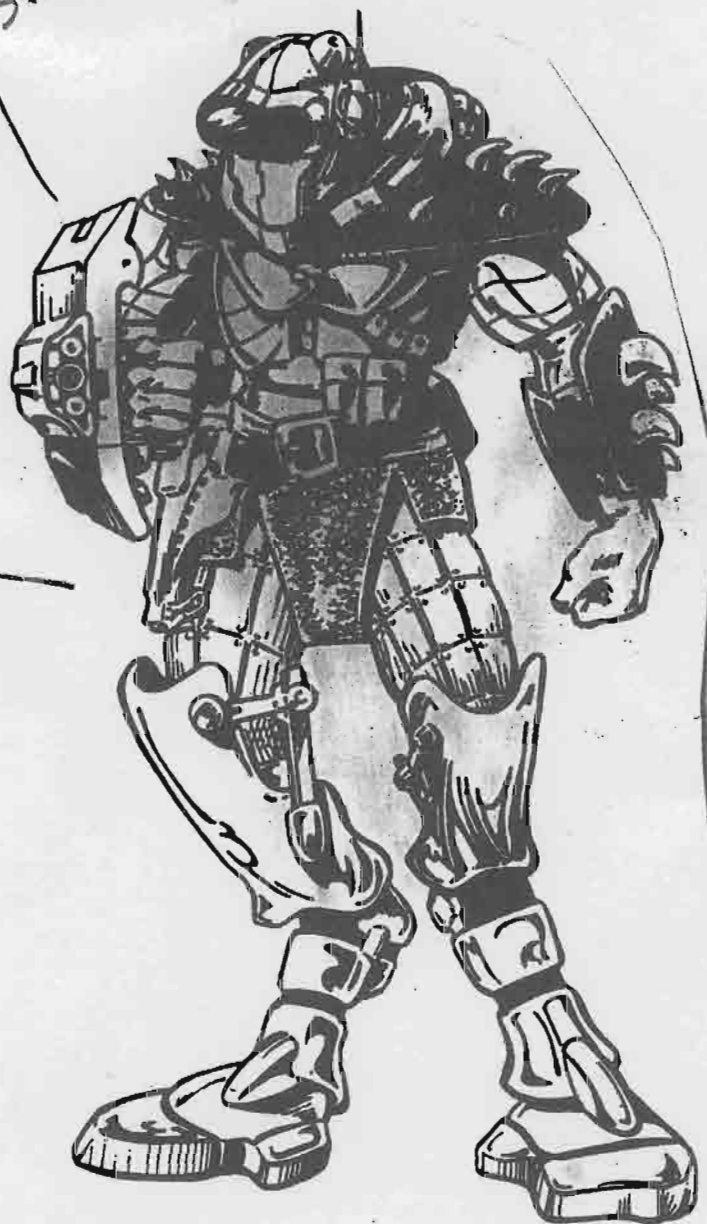
McG

Character Design 14

Type - Alien Slaver
Side - "Axis" Alien

cool design

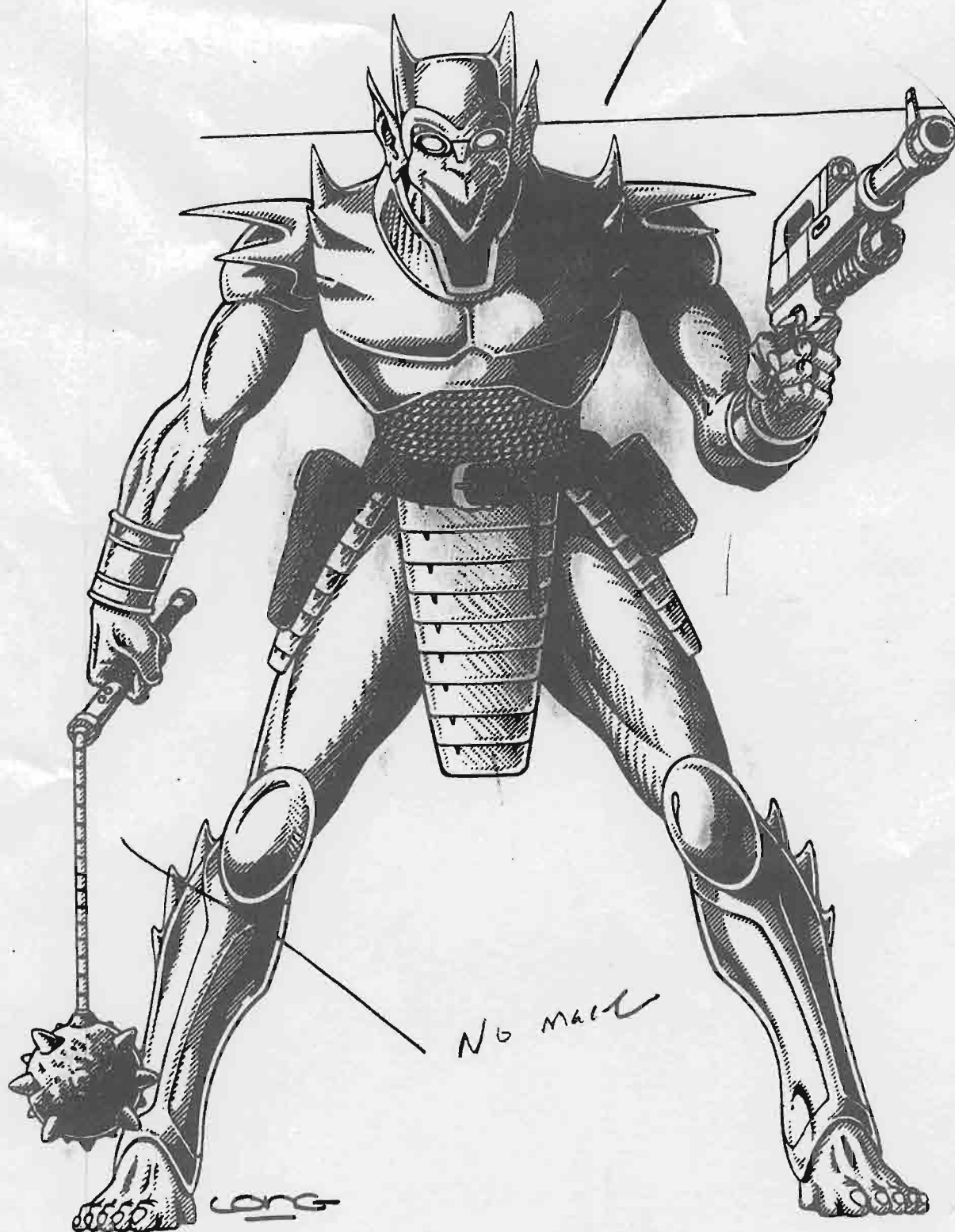
No arm
shield



Character Design 14

Type - Alien Slaver
Side - "Axis" Alien

*I like
body armor
detail*



Character Design 15

Type - Savage Alien "no body armor"
Side - "Axis" Alien



Character Design 15

Type - Savage Alien "no body armor"
Side - "Axis" Alien

could be a
combination of mechanical
and organic



Character Design 16

Boss character

Type - Alien Power Armor

Side - "Axis" Alien



*I like
this one
more*



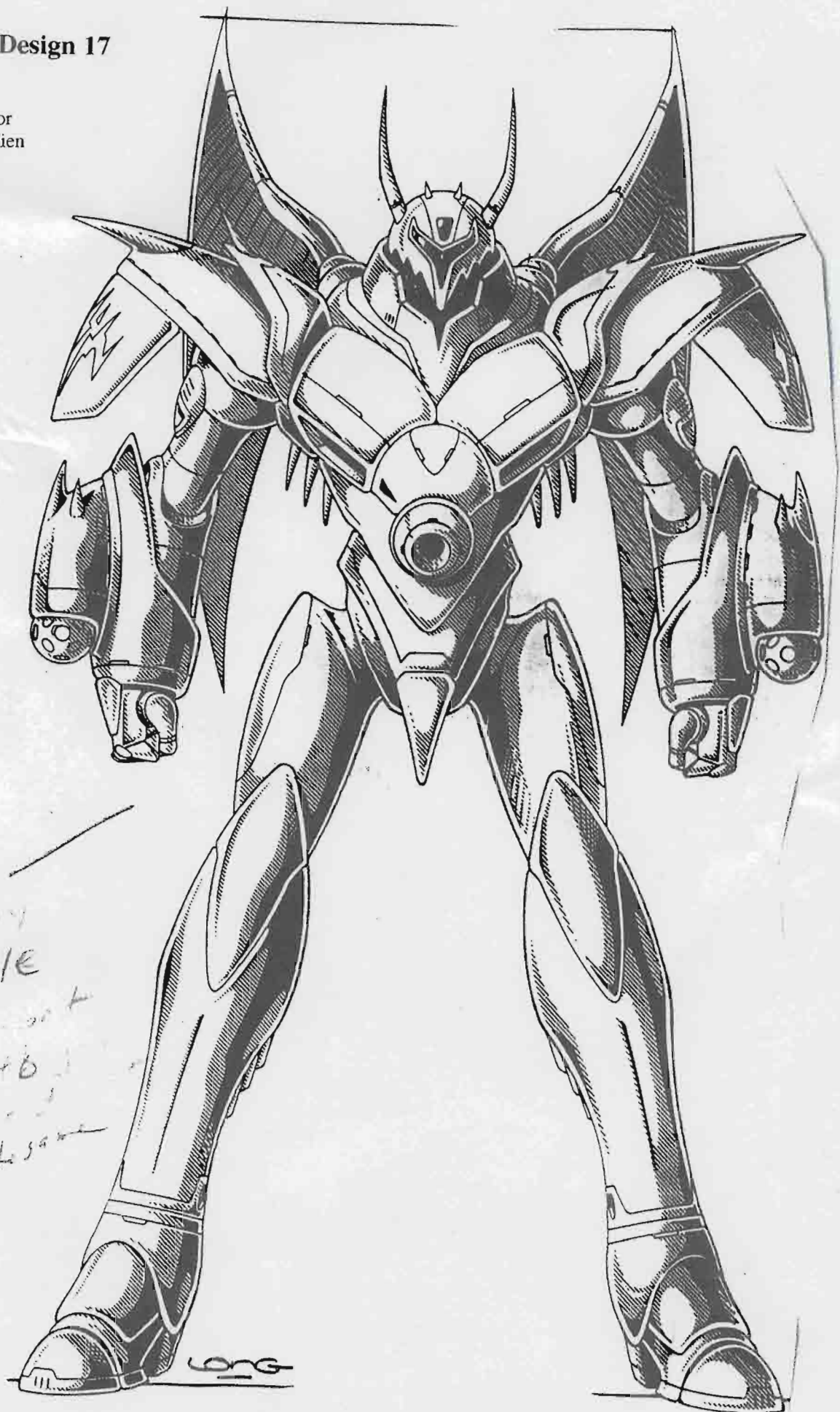
*cool
detail*

RAG • SEMBIDA '13

Character Design 17

Boss character

Type - Dominator
Side - "Axis" Alien



I like
the code
the style
I don't want
to go to
make
but the same

Character Design 18

Boss character

Type - One eye Alien

Side - "Axis" Alien

You could go with
the organic look or
mechanical look

